

Wembley Conference Centre

John F Hunt



Quintain Estate & Developments Limited



£4.5m

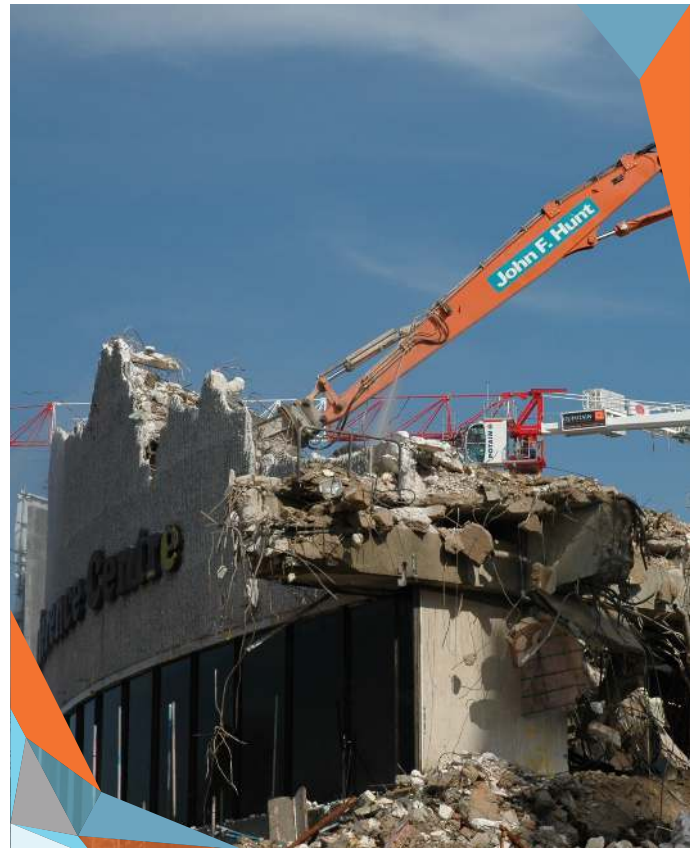


28 weeks

Project Overview

Demolition of the Wembley Conference Centre, which included two Exhibition Halls, linked footbridges, office blocks and underground car parks. The 1969 Conference Centre was a circular structure 240m in circumference with 5 metre deep complex steel trusses spanning 80 metres and totalling 5,608m².

Adjoining the Conference Centre was the 722m² Greenwich Rooms and triangular 6,430m² Elvin House, a reinforced concrete 2 storey office complex. A pedestrian link bridge joined Elvin House to Exhibition Hall 1 requiring 6,587m² of demolition and Exhibition Hall 2 totalled 6,017m² with a pedestrian link bridge to the old Wembley Stadium.



Achievements

Almost 100% of soft strip was recycled and 100% of the concrete was crushed for re-use.

We achieved a high level of compliance on our Considerate Contractors Scheme Report.



Challenges

Elvin House remained occupied for three months after the works started onsite.

The demolition of the Conference Centre involved retaining the front house at low level to support the undercroft which held up the road. This route was subsequently closed and handed to us to remove the lower level structure and the road area.

Throughout the project we recruited local workers using a local recruitment agency, allowing us to give back to the community by way of training and creating opportunity. Many of the operatives have continued to work with John F Hunt on subsequent projects around London.

