

41 Lothbury, EC2R 7HF

John F Hunt



Wates



£4.3m

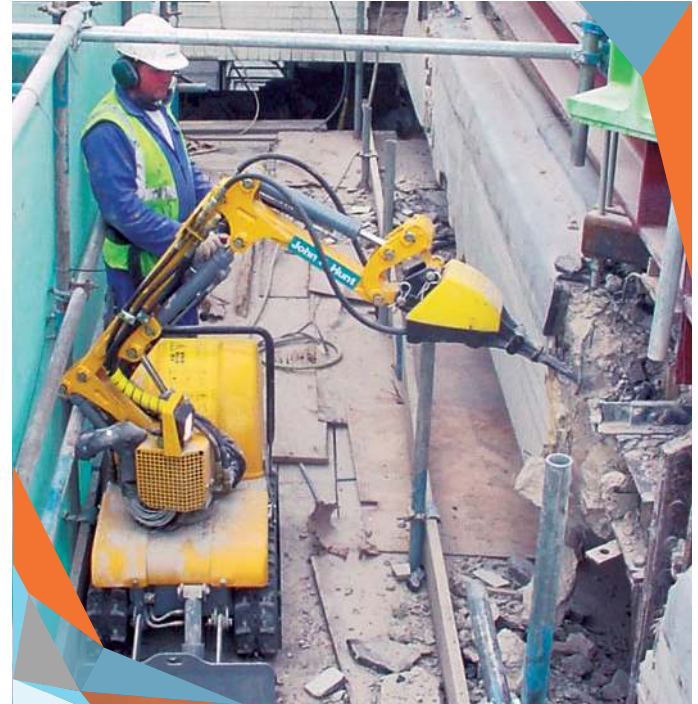


24 months

Project Overview

Formerly the Head Quarters of National Westminster Bank, situated directly adjacent to the Bank of England.

This steel framed Grade II listed building had numerous features, which had to be protected and retained during the extensive "surgical" demolition programme.



specially constructed scaffolds. Initially, only two access shafts could be created through the frame of the structure for removal of debris.

The project was complicated when the presence of 1.5 km of asbestos lagged pipe work was discovered within the floor screeds and 1200m bricked up within the walls.

The combination of the retained facade and the vast listed Banking hall precluded any vehicle access within the site, therefore two cranes were mounted on the roof to lift debris over the side of the building in heavy duty mining skips.

Robotic Brokks fitted with Hydraulic attachments overcame the issues of noise and time spent within the various confined spaces, with hydraulic cable cutters removing the services.

Large air handling and extraction equipment was installed throughout basements levels with mandatory wearing of ear defenders.

Challenges

Following the soft strip and asbestos removal, complete sections of the 12 storey structure were demolished. 3 basements levels were removed consisting of 2m thick RC vault walls and 30 vault doors, some weighing up to 4 tonnes each.

Wherever possible, removing the concrete was undertaken by robotic BROKK machines operated from

Achievements

The investment in the robotic plant, together with diligence and the training of the site made this an accident free project.

Additional traffic restrictions by Westminster Council were enforced at the time of this project, and with the lack of vehicle site access due to the retained façade and listed banking hall, the installation of the two roof mounted tower cranes allowed us to negotiate the debris removal issues successfully.

