

150 Holborn, London EC1N 2NS

John F Hunt



DAR Group



£2.4 m



29 weeks

Project Overview

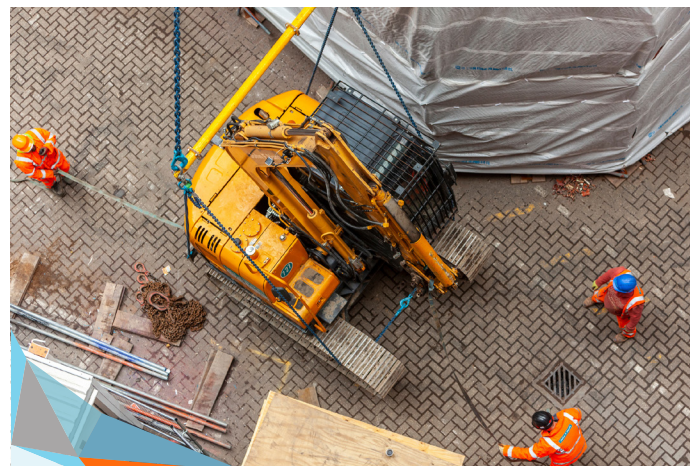
A seven storey, 1980's reinforced concrete building, constructed within London's central business district on the corner of Chancery Lane and Grays Inn Road.

As Principal Contractor John F Hunt undertook the structural demolition, while concurrently completing pile preparation works and installing temporary retention within the basement below.



Achievements

Project delivered on time, on budget and without incident



Challenges

150 Holborn provided the unique challenge of an inner city peninsular site, bounded by three roads, adjacent to Chancery Lane Underground Station, and with a vast range of commercial properties and neighbouring residents.

The key to the projects success is attributed to early planning and stake holder involvement, in line with our duties as the Principal Contractor, allowing control and management of the risk.

Given the proximity to sensitive receivers, the environmental management of noise, vibration and air quality was critical. With high traffic and pedestrian flows, public protection, pedestrian management and vehicles logistics planning was paramount.

With works required above and below the ground floor slab, concurrent workfaces demanded an emphasis on safety & engineering control.

In excess of 15,000 tonnes of demolition arisings were removed from site for recycling.