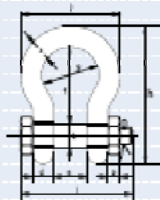




## Green Pin® Standard Bow Shackles with safety bolt

- **Material** : bow and pin high tensile steel, Grade 6, quenched and tempered
- **Safety Factor** : MBL equals 6 x WLL
- **Standard** : EN 13889 and meets performance requirements of US Fed. Spec. RR-C-271 Type IVA Class 3, Grade A
- **Finish** : not dipped galvanized
- **Temperature Range** : -20°C up to +200°C
- **Certificates** : as standard a works certificate is supplied, also upon request a certificate of basic raw material, manufacturer test certificate and/or EC declaration of conformity



working load limit	diameter bow	diameter pin	diameter eye	width eye	width inside	length inside	width bow	length bow	length bolt	width bow	thickness nut	weight each
tons	a	b	c	d	e	f	g	h	i	j	k	kg
0.5	7	8	17	7	12	29	20	54	43	37	4	0.06
0.75	9	10	21	9	13.5	32	22	61	51	42	5	0.11
1	10	11	23	10	17	36.5	26	71	61	49	8	0.16
1.5	11	13	26	11	19	43	29	80	68	54	11	0.22
2	13.5	16	34	13.5	22	51	32	91	83	63	13	0.42
3.25	16	19	40	16	27	64	43	114	99	79	17	0.74
4.75	19	22	47	19	31	76	51	136	115	94	20	1.18
6.5	22	25	53	22	36	83	58	157	131	107	23	1.77
8.5	25	28	60	25	43	96	68	176	151	124	25	2.58
9.5	28	32	67	28	47	108	76	197	167	137	28	3.66
12	32	36	74	32	51	116	83	216	179	154	31	4.51
13.5	35	38	80	35	57	133	92	240	198	170	34	6.64
17	38	42	89	38	60	146	99	262	203	183	39	8.19
25	45	50	104	45	74	178	126	314	244	226	24	14.22
35	50	57	119	50	83	197	138	358	270	250	27	19.85
42.5	57	65	134	57	95	222	160	414	302	287	30	28.33
55	65	70	148	65	106	260	180	483	330	329	33	38.59
85	75	83	163	75	127	329	190	596	376	365	40	62.00